

## Talis S

### Single lever basin mixer 210 with swivel spout and pop-up waste set

Surfaces: **Chrome** Article Number: **72105000**



#### Description

##### product features

- consists of: single lever basin mixer, waste set
- ComfortZone 210
- projection 162 mm
- swivel range 120°
- normal spray
- flow rate at 3 bar: 5 l/min
- ceramic cartridge
- temperature limitation adjustable
- suitable for continuous flow water heaters
- pop-up waste set G 1¼
- material waste set: metal
- connection type: G ¾ connections
- connection dimension: DN15

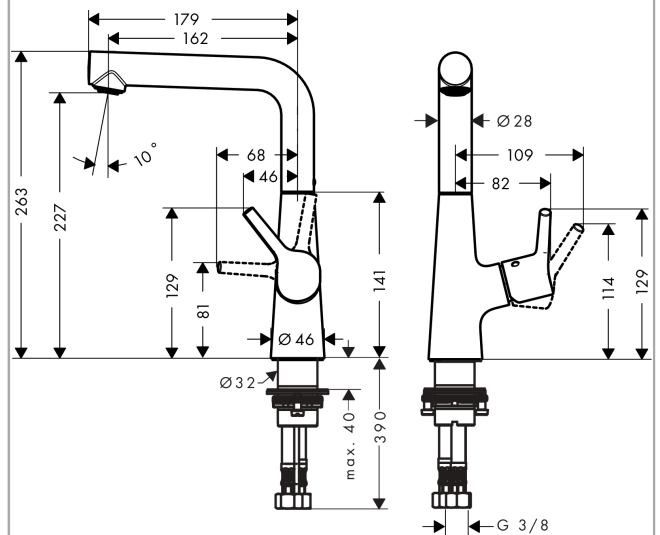
#### Technology



#### Product image



#### Scale drawing



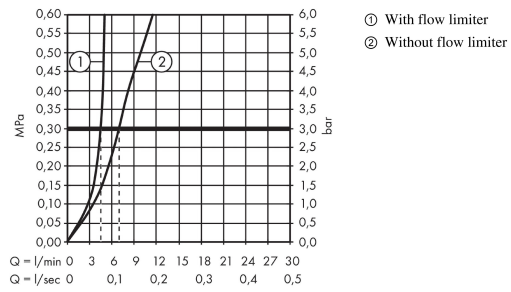
**Talis S**

**Single lever basin mixer 210 with swivel spout and pop-up waste set**

Surfaces: **Chrome** Article Number: **72105000**



**Flowchart**



**Talis S**

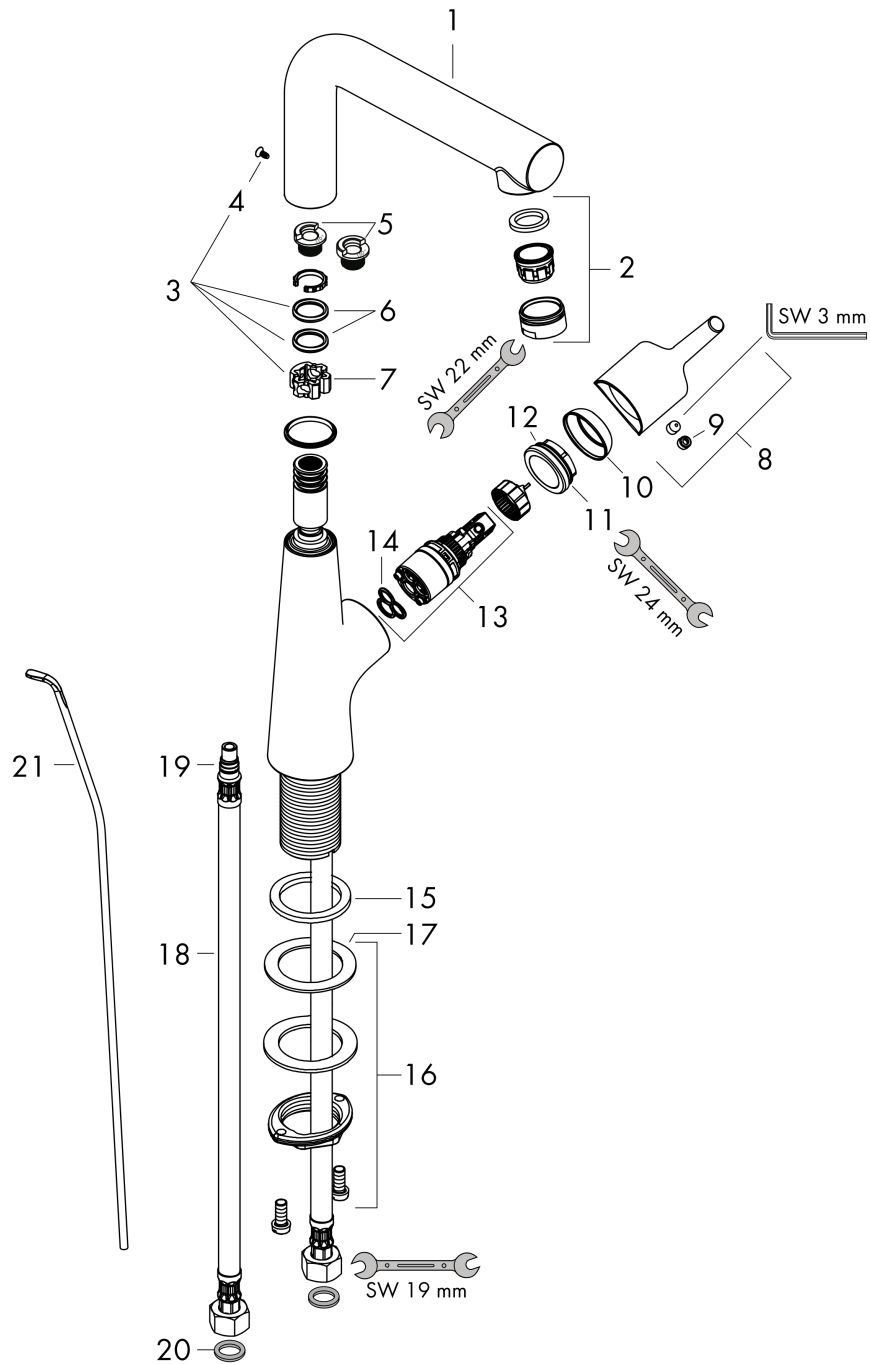
**Single lever basin mixer 210 with swivel spout and pop-up waste set**

Surfaces: **Chrome** Article Number: **72105000**



**Exploded Drawing**

Year of production: >01/16



## Talis S

Single lever basin mixer 210 with swivel spout and pop-up waste set

Surfaces: **Chrome** Article Number: **72105000**



### Spare part list

Year of production: >01/16

Pos.	Description	Article Number	Price	PU
1	spout cpl.	92775000	-	1
2	aerator M24x1 (5 l/min)	13185000	-	1
3	sealing set	92646000	-	1
4	screw	97662000	-	1
5	set of locating rings (110° / 150°)	98486000	-	1
6	O-Ring 14x2,5	98189000	-	1
7	axialring	97558000	-	1
8	handle	92771000	-	1
9	screw cover	95704000	-	1
10	flange	95493000	-	1
11	nut	95178000	-	1
12	O-ring 24x2	98388000	-	1
13	cartridge, assy	97685000	-	1
14	seal	98865000	-	1
15	flat seal	98749000	-	1
16	fixing set (Ø 32)	13961000	-	1
17	lever collar	97548000	-	1
18	connection hose 450 mm M8x0,75 G3/8	97206000	-	1
19	O-ring 7x1,5	98422000	-	1
20	sealing set	95581000	-	1
21	pull rod	96657000	-	1
a	pop up waste	94139000	-	1
b	pop up waste	94139007	-	1
c	fixation extension 35 mm	13898000	-	1